

North Carolina Pest News

Departments of Entomology and Plant Pathology



Stephen J. Toth, Jr., editor

Volume 22, Number 18, August 10, 2007

CAUTION !

The information and recommendations in this newsletter are applicable to North Carolina and may not apply in other areas.

In This Week's Issue . . .

FIELD AND FORAGE CROPS

- Insect Management in Cotton
- Peanut Insect and Mite Pests

ORNAMENTALS AND TURF

- Peachtree Borers
- Redheaded Ash Borers
- Cultural Control to Prevent Tree Pests

INSECT TRAP DATA

- Light Trap Data from Anson, Stanly and Union Counties
- Light Trap Data from Bertie County
- Light Trap Data from Chowan County
- Light Trap Data from Craven County
- Light Trap Data from Cumberland County
- Light Trap Data from Duplin County

- Light Trap Data from Edgecombe County
- Light Trap Data from Jones County
- Light Trap Data from Lenoir County
- Light Trap Data from Martin County
- Light Trap Data from Nash County
- Light Trap Data from Northampton County
- Light Trap Data from Onslow County
- Light Trap Data from Robeson County
- Light Trap Data from Sampson County
- Light Trap Data from Scotland County
- Light Trap Data from Wayne County
- Light Trap Data from Wilson County

See current and archived issues of the *North Carolina Pest News* on the World Wide Web at:
http://ipm.ncsu.edu/current_ipm/pest_news.html

FIELD AND FORAGE CROPS

From: Jack S. Bachelier, Extension Entomologist

Insect Management in Cotton

In most of the state, extended very hot and dry conditions dominate the cotton landscape, and also dictate insect levels and management decisions. Although light trap counts were high at a number of locations (such as the 342 bollworm moths captured in a Craven County light trap and the 358 moths collected in a Northampton County trap on Monday, August 6), completely “cut out” conditions in many areas have rendered cotton fields no longer attractive to bollworm moths or susceptible to bollworm damage to fruit. More specifically, in cotton fields in which blooming has stopped and small bolls have been shed, if no medium or large worms are present then establishment of new bollworms from recently deposited eggs is not likely.

On the other hand, in the few areas in which cotton is still fruiting well and showing a continuum of small and medium squares, blooms and small and large bolls, egg levels and damage potential may be very high. Both bollworms and stink bugs commonly avoid droughty, “cut out” cotton fields and concentrate in the lush greener fields. In one such cotton field in Halifax County, a consultant was finding egg levels as high as 50+ percent on fruit alone. Those are very high egg levels. So in the few conventional and Bollgard cotton fields with plenty of young fruit cotton, damage from bollworms and stinks bugs is still an issue and may be substantial.

For stink bugs, in fields that fourth or fifth week of blooming, blooming well, and have the moisture to hold onto small bolls, we would recommend a protective threshold of about 10 percent internal boll damage to quarter sized bolls for the next week to 10 days. In cotton fields entering their sixth or seventh weeks of blooming, particularly those which have shed smaller bolls, the threshold for quarter sized bolls (assuming you can find them) should probably be in the 30 to 50 percent range because most of the bolls on the plant can no longer be damaged by stink bugs.

Beet armyworms are still showing up in scattered cotton fields throughout the state, but no cotton fields brought to our attention have been in need of treatment. In most situations that I’m aware of, the aphid fungus has either taken out or limited cotton aphid levels this past week, even in this dreadful weather.

I’m sure most producers would gladly have traded more insect damage for higher moisture levels this season. This year it would appear that most of them will not get their wish.

From: Rick L. Brandenburg, Extension Entomologist

Peanut Insect and Mite Pests

Spider mites reared their ugly little heads awhile back and with the weather as hot and dry as it is, I can't believe they are not any worse than they are. If you're not scouting for them you should be. We have two products available, Comite and Danitol. Use them wisely and remember that Danitol also controls worms. When we are hot and dry we sometimes see a few beet armyworms and sure enough there have been a few fields with some problems with this caterpillar. In general, they are not the problem that corn earworms are in peanuts. They are susceptible to a different group of products than are the corn earworms, so make sure you know what you are working with. Beet armyworms have a distinct yellow stripe down each side with a dark spot on each side of the body just behind the head and above the second set of legs. Tracer, Steward, Lannate, Prolex and Proaxis are all labeled for beet armyworm control.

ORNAMENTALS AND TURF

From: Stephen B. Bambara, Extension Entomologist

Peachtree Borers

I'm not sure how everything is surviving the extreme hot temperatures, but peachtree borer season should be building by the end of the month. These insects are common on peach and related *Prunus* trees, including some laurel varieties. Symptoms are frass and possible gum exudate (Fig. 1) around the base of the tree or shrub. There are several out-of-date treatment suggestions floating around. The most reliable treatment is preventive bark sprays on the lower trunk and crown region. There is no practical treatment for insects already boring in the wood. Though some adult moths (Fig. 2) are present most of the summer, the first of September is the peak moth flight period in eastern North Carolina. For additional information on the peachtree borer, see *Ornamental and Turf Insect Note No. 141* on the web at: <http://www.ces.ncsu.edu/depts/ent/notes/O&T/trees/note141/note141.html>.



Fig. 1. Frass and tunneling by the peachtree borer. Image from James R. Baker.

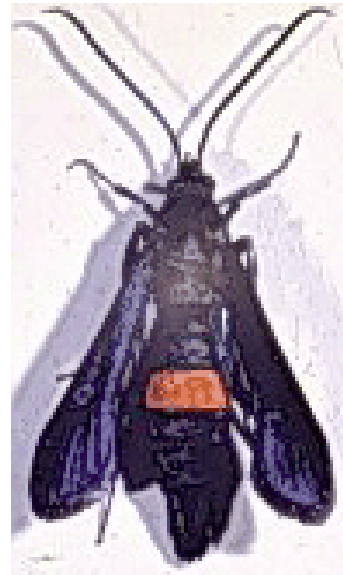


Fig. 2. Female peachtree borer moth. Image from James R. Baker.

Redheaded Ash Borers

Redheaded ash borers (Fig. 3) breed in dying or dead hardwood trees, and even felled logs which still have the bark intact. Debarked logs are safe from this beetle. The larvae feed on the sapwood and later tunnel into the heartwood and sometimes almost turn it completely into powder. There is no control recommended for redheaded ash borer larvae already inside living trees. The adult beetles emerge as soon as the weather warms up in spring and are active until the weather cools off in autumn. There are several generations per year in North Carolina. No control measures are appropriate since this insect does not attack healthy trees.



Fig. 3. Redheaded ash borer. Image by Marlin Rice, Iowa State University.



Fig. 4. Over-mulched trees on Centennial Blvd. in Raleigh. Image by Stephen B. Bambara.

Cultural Control to Prevent Tree Pests

Healthy trees are often capable of combating mild insect attacks. In fact, many of the telephone calls we receive are about insects that normally only attack dead and dying trees and are not the cause of the tree's problem. What can you do for a tree to keep it healthy? Here is a short list.

1. Make sure the tree receives the appropriate amount of sunlight for the species.
2. In my opinion, trees (especially established trees) need zero or little added fertilizer. Extra nitrogen can cause overgrowth or might encourage certain insects.
3. Perform a soil test to see if soil conditions are appropriate for the tree.
4. Minimize turf around the root zone. Use mulch if possible, but **NOT** against the bark. Apply mulch three inches deep at the most (Fig. 4). Turf and tree roots are in direct competition for water. Regular lawn fertilization is not beneficial to the tree.
5. In order to reduce soil compaction, avoid parking vehicles, having playgrounds or conducting other heavy traffic activities beneath a tree.
6. Don't change the oil from the old 1960 Ford Galaxy (that you've been restoring to look like the police car from *The Andy Griffith Show*) under the tree.
7. Quickly prune out any newly damaged limbs. Tree injuries can attract insects within hours.
8. Drought conditions may not have a noticeable impact on established trees the first year. Repeated dry conditions may result in a problem two or three seasons later. If possible, practical and affordable, watering a specimen tree might be justifiable. Ask about the best way to do this if you are unsure.
9. Keep that mower and weed trimmer away from the bark.

INSECT TRAP DATA

From: Thomas G. Pegram, Agricultural Extension Agent, Union County

Light Trap Data from Anson, Stanly and Union Counties

```

*****
                        Number of Adult Insects
*****
      Anson S      Anson N      Union S      Union N      Stanly
*****          *****          *****          *****          *****
Date    CBW  GR  BR  CBW  GR  BR  CBW  GR  BR  CBW  GR  BR  CBW  GR  BR
*****
July 9      -  -  -    0  0  0    6 36  0    7  4  2   10  0  0
July 11     -  -  -    0  0  0    6 40  0    4  4  0    3  0  0
July 13     -  -  -   10  0  0    7 41  0   10  3  2    4  0  0
July 16     9 53  0   15  -  -    7 19  -    4  7  0   10  0  0
July 18     9 55  0    -  -  -    9 27  -    8  5  1    6  1  0
July 20    12 64  2   19  -  -   26 39  -    7  9  0    6  0  0
July 23    13 58  0   20  -  -  power outage 11  2  0   12  1  0
July 25    12  2  0   22  -  -   37  7  0    7  0  0   13  1  0
July 27    31  4  0   85  -  -   28  3  0   10  1  0   17  0  0
July 30    72 18  1   75  1  -   56 21  -    7  3  1   13  0  0
August 1   29  5  0   67  1  -   32 16  -   19  4  0   18  2  0
August 3   55 23  0   51  1  -  104 18  -   12  1  0   19  1  0
August 6  139 22  1   78  0  0  245 51  0   38  6  1   38  1  0
August 8  142 21  0   60  0  0  270 78  0   52  5  0   30  3  0
August 10 175 21  0   58  3  0  294 67  0  117 14  0   16  0  0
*****
    
```

CBW = cotton bollworm moths; GR = green stink bugs; BR = brown stink bugs

From: Richard W. Rhodes, County Extension Director, Bertie County

Light Trap Data from Bertie County

```

*****
      Windsor      Woodard      Hexlena      Roxobel      Colerain
*****          *****          *****          *****          *****
Date    BW  GSB  BSB  BW  GSB  BSB  BW  GSB  BSB  BW  GSB  BSB  BW  GSB  BSB
*****
July 19      0  0  0    7  3  0    0  0  0   16  5  0    -  -  -
July 20      5 16  0   24  3  0    0  4  0    -  -  -    -  -  -
July 21      0  0  0    -  -  -    0  0  0   10  3  0    -  -  -
July 22      3  0  0    -  -  -    0  0  0    -  -  -    -  -  -
July 23      0  0  0   14  2  0    0  0  0   16  0  0    0  0  0
July 24      3  4  0    7  0  0    6  0  0   13  1  0   29  0  0
July 25      4  1  0   16  1  0    -  -  -   16  1  0   47  0  0
July 26      5  0  0   26  1  0    3  0  0   12  0  0   30  0  0
July 27      3  0  0   27  1  0    6  0  0   22  2  0   69  0  0
July 28      3  0  0    -  -  -    -  -  -    -  -  -    -  -  -
July 29      9  1  0    -  -  -    -  -  -    -  -  -    -  -  -
July 30      7  1  0   41  1  0   11  0  0   23  0  0  115  1  0
July 31      4  0  0   10  0  0   14  0  0   14  0  0   40  0  0
August 1     11  0  0   11  1  0   15  0  0    9  0  0   57  0  0
August 2     14  0  0   11  0  0   19  0  0   14  0  0   54  0  0
    
```

August 3	26	0	0	15	0	0	26	0	0	5	0	0	62	4	0
August 4	32	2	0	-	-	-	-	-	-	-	-	-	-	-	-
August 5	118	3	0	-	-	-	-	-	-	-	-	-	-	-	-
August 6	48	0	0	82	7	0	168	0	0	24	2	0	258	41	0
August 7	111	3	0	-	-	-	23	0	0	12	3	0	119	9	0
August 8	128	11	0	136	5	0	164	0	0	11	1	0	88	13	0
August 9	88	10	0	43	5	0	82	22	0	24	4	0	82	3	0
August 10	-	-	-	39	4	0	44	0	0	13	3	0	-	-	-

BW = Bollworm moths; GSB = Green stink bugs; BSB = Brown stink bugs

From: Mike Williams, County Extension Director, Chowan County

Light Trap Data from Chowan County

```

*****
                          Adult Insects
*****
Date          CEW      GSB      BSB      ECB
*****
July 25       11         -         -         -
July 26       35         -         -         -
July 27       25         -         -         -
July 28       19         1         -         -
July 29        -         -         -         -
July 30       30         2         -         -
July 31       18         0         -         -
August 1      28         0         -         -
August 2      30         1         -         -
August 3      48         4         -         -
August 4      38         1         -         -
August 5      68         2         -         -
August 6      36         12        -         -
August 7     136         4         -         -
August 8     163         4         -         -
August 9     223         10        -         -
August 10    210         8         -         -
*****

```

CEW = Corn earworms (bollworms); GSB = Green stink bugs;
 BSB = Brown stink bugs; ECB = European corn borers

From: Mike Carroll, Agricultural Extension Agent, Craven County

Light Trap Data from Craven County

```

*****
                          Number of Adult Insects
*****
Date          THW      TBW      CEW      GSB      BSB      ECB      FAW      BAW      Looper
*****
July 6         3         1        11         1         1         -         2         -         -
July 9         5         1        26         2         1         -         1         -         -
July 11        2         -        22         1         1         -         -         -         -

```

July 13	4	-	28	2	-	-	1	-	-
July 16	4	2	34	2	1	-	3	-	-
July 18	3	-	10	1	-	-	-	-	-
July 19	5	1	23	3	2	-	1	-	-
July 23	7	2	31	2	1	-	2	-	-
July 25	1	-	29	-	-	2	1	-	-
July 27	1	-	33	1	-	-	2	-	-
July 30	-	-	-	-	-	-	-	-	-
August 1	1	-	73	1	-	-	4	-	-
August 3	-	2	141	1	-	3	5	-	-
August 6	5	-	342	8	-	-	6	-	-
August 8	3	-	451	3	-	-	10	-	-
August 10	4	-	375	8	-	-	-	-	-

THW = tobacco hornworms; TBW = tobacco budworms; CEW = corn earworms;
 GSB = green stink bugs; BSB = brown stink bugs; ECB = European corn
 borers; FAW = fall armyworms; BAW = beet armyworms

Location of trap: Cove City
 Cooperators: R&W McCoy Farms and Cove City Fertilizer

From: Colby S. Lambert, Agricultural Extension Agent, Cumberland County

Light Trap Data from Cumberland County

Number of Adult Insects

Date	THW	CEW	GSB	BSB
July 11	0	3	5	0
July 13	0	2	5	0
July 16	4	33	12	0
July 18	2	66	6	0
July 20	7	160	20	0
July 23	23	214	0	0
July 25	14	150	6	0
July 27	12	202	13	0
July 30	6	197	12	0
August 1	-	-	-	-
August 3	-	-	-	-
August 6	-	-	-	-
August 8	9	442	19	0
August 10	5	271	18	0

THW = tobacco hornworms; CEW = corn earworms;
 GSB = green stinks bugs; BSB = brown stink bugs

Trap located in Godwin at Cumberland/Harnett County Line
 at Lewis Farms off of Highway 301

From: Curtis D. Fountain, Agricultural Extension Agent, Duplin County

Light Trap Data from Duplin County

```

*****
                Number of Adult Insects
                *****
Date            BW            GSB            BSB
*****
July 2          0             1             0
July 4          0             0             0
July 6          0             4             4
July 9          4             8             0
July 11         1             11            0
July 13         4             7             2
July 16         3             6             0
July 18         9             13            0
July 20        21             23            0
July 23        22             3             0
July 25        15             0             0
July 27        53             4             0
July 30        73             1             0
August 1       98             2             0
August 3       71             3             0
August 6      293            12            0
August 8       84             24            0
August 10      28             11            0
*****

```

BW = cotton bollworms; GSB = green stink bugs; BSB = brown stink bugs

Trap location: approximately two miles east of Albertson
 Cooperator: Justin Murphy

From: Arthur R. Bradley, Jr., Agricultural Extension Agent, Edgecombe County

Light Trap Data from Edgecombe County

```

*****
                Number of Adult Insects
                *****
                W Edgecombe /a      Coakley /b      Lawrence /c
                *****          *****          *****
Date            CEW   BS   GS   CEW   BS   GS   CEW   BS   GS
*****
July 10         -    -   3    14    0   46    -    -    -
July 11         -    -   6     4    0   28    -    -    -
July 13         0    0   7     8    0   44    -    -    -
July 15         0    0   5    10    0   49    -    -    -
July 18         0    0   8     2    0   39    -    -    -
July 20         8    0   1     1    0   56    4    0   4
July 23         8    0   0     8    0   3     1    0   0
July 25        17    0   2     -    -   -     7    0   0
July 27        24    0   3    14    0   5    10    0   3
July 30        29    0   8    28    0   5     2    0   2
August 1       12    0   2    11    0   2    16    0   1

```

August 3	36	0	15	33	0	2	8	0	1
August 6	40	0	10	235	0	30	133	0	11
August 8	35	0	7	318	0	58	117	0	9
August 10	35	0	7	280	0	65	50	0	8

Abbreviations: CEW = corn earworms;
 BS = brown stink bugs; GS = green stinks bugs

a = trap located 12 miles west of Tarboro; maintained by Tom Porter.
 b = trap located 5 miles east of Tarboro; maintained by Glenn O'Neal.
 c = trap located at Lawrence; maintained by Terri Thomas.

From: Franky J. Howard, Agricultural Extension Agent, Jones County

Light Trap Data from Jones County

Number of Adult Insects

Date	BW	BSB	GSB	HW
July 2	0	0	0	0
July 4	0	0	0	0
July 6	1	0	0	1
July 9	7	0	0	0
July 11	0	0	0	1
July 13	0	0	0	0
July 16	0	1	1	15
July 18	0	4	0	18
July 20	0	0	1	7
July 23	1	0	0	4
July 25	5	0	1	10
July 27	23	0	0	2
July 30	27	0	0	0
August 1	49	0	1	2
August 3	34	0	0	5
August 6	41	0	3	11
August 8	12	0	0	0

Trap Location: Comfort
 Monitored by: Morris and Brett Pike

BW = bollworms; BSB = brown stink bugs;
 GSB = green stink bugs; HW = hornworms

From: Alan A. Harper, Lenoir County

Light Trap Data from Lenoir County

June

```
*****
                        Number of Adult Insects
*****
Date      HW      CEW      ECB      AW      AWC      GSB      BSB      TBW
*****
June 15   0       5       0       5       2       0       0       0
June 16   0       7       0       1       3       0       0       0
June 17   0       0       0       2       2       2       0       1
June 18   0       1       1       1       4       0       0       0
June 19   0       3       0       0       2       2       4       0
June 20   0       5       1       0       3       0       2       0
June 21   -----no electric power-----
June 22   0       2       0       0       1       0       0       0
June 23   1      10       1       3      14       1       0       1
June 24   0       3       0       1       4       0       0       0
June 25   0       1       1       1       2       1       0       0
June 26   0       0       5       0       6       3       0       0
June 27   0       3       4       1       2       2       0       0
June 28   0       4       1       0       3       1       0       0
June 29   0       4       0       1       2       0       0       0
June 30   0       4       2       1       5       0       0       0
*****
```

July

```
*****
                        Number of Adult Insects
*****
Date      HW      CEW      ECB      AW      AWC      GSB      BSB      TBW
*****
July 1    -----no electric power-----
July 2    0       3       0       0       3       2       0       0
July 3    0       6       2       0       6       1       0       0
July 4    0       1       0       0       3       0       0       0
July 5    0       2       1       0       5       4       0       0
July 6    0       3       1       0       2       1       0       0
July 7    0       3       1       1       3       4       0       0
July 8    -----no electric power-----
July 9    0       2       2       0       5       3       0       0
July 10   0       2       0       0       0       7       0       0
July 11   0       1       0       0       3       3       0       0
July 12   0       0       0       0       1       1       0       0
July 13   0       2       2       0       5       9       0       0
July 14   0       4       2       0       3       1       0       0
July 15   0       0       3       4       1       4       0       0
July 16   1       2       1       1       4       9       0       0
July 17   0       3       2       1       2       3       0       0
July 18   0       2       0       0       1       1       0       0
July 19   1      12       1       0       3      15       0       0
July 20   0      11       2       0       7       7       2       0
July 21   -----unplugged-----
July 22   0      12       2       0       7       0       0       0
July 23   0       8       4       0       4       1       0       1
*****
```

July 24	1	13	0	1	2	0	0	0
July 25	0	22	1	1	2	3	0	0
July 26	0	21	3	1	4	1	0	0
July 27	0	19	1	0	3	3	0	0
July 28	0	27	6	1	3	2	0	2
July 29	0	28	4	1	4	2	0	0
July 30	0	41	0	1	3	2	0	0
July 31	1	31	3	0	3	3	0	0

August

Number of Adult Insects

Date	HW	CEW	ECB	AW	AWC	GSB	BSB	TBW
August 1	2	37	2	0	8	5	1	0
August 2	0	85	3	0	2	11	0	0
August 3	0	76	4	0	3	6	0	0
August 4	0	84	2	0	1	18	0	0
August 5	0	76	4	1	4	14	0	0
August 6	0	99	1	0	2	16	0	0
August 7	0	55	5	0	0	25	0	0
August 8	1	65	1	0	1	32	0	0
August 9	1	60	3	0	4	13	1	0
August 10	1	30	2	0	0	23	0	1

Abbreviations: HW = hornworms; CEW = corn earworms; ECB = European corn borers; AW = true armyworms; AWC = armyworm complex; GSB = green stink bugs; BSB = brown stink bugs; TBW = tobacco budworms

From: J. B. Coltrain, County Extension Director, Martin County

Light Trap Data from Martin County

Date	Farm Life			Robersonville		
	BW	GSB	BSB	BW	GSB	BSB
July 16	7	3	-	0	8	-
July 18	4	5	-	0	5	-
July 20	1	3	-	0	7	-
July 23	7	0	-	7	0	-
July 25	11	0	-	6	1	-
July 27	9	0	-	10	0	-
July 30	17	2	-	16	2	-
August 1	16	0	-	10	1	-
August 3	22	1	-	27	1	-
August 6	32	8	-	175	4	-

BW = Bollworm moths; GSB = Green stink bugs; BSB = Brown stink bugs

From: Charlie Tyson, Agricultural Extension Agent, Nash County

Light Trap Data from Nash County

```

*****
                        Number of Adult Insects
                        *****
Date          CEW          GSB          BSB
*****
July 13       3            -            -
July 16       10           -            -
July 18        5            3            -
July 20        8            10           1
July 23       14            3            0
July 25        1            0            0
July 27       25            0            0
July 30       23            0            0
August 1      16            0            0
August 3      46            0            0
August 6     108            0            0
August 8      82            22           1
August 10     72            17           0
*****

```

CEW = corn earworms; GSB = green
stink bugs; BSB = brown stink bugs

Trap location: near Hickory Crossroads

From: Craig Ellison, Agricultural Extension Agent, Northampton County

Light Trap Data from Northampton County

```

*****
                        Number of Adult Insects
                        *****
Woodland   Conway   'Neck   Seaboard   Gaston   Jackson
*****    *****    *****    *****    *****    *****
Date      CEW GR BR  CEW GR BR  CEW GR BR  CEW GR BR  CEW GR BR  CEW GR BR
*****
July 18   - - -    - - -    - - -    3 4 -    - - -    0 12 0
July 20   - - -    - - -    - - -    2 2 0    - - -    12 89 2
July 23   - - -    4 2 0    - - -    6 0 0    - - -    25 2 0
July 25   0 0 0    - - -    - - -    12 4 0    - - -    26 5 0
July 27   0 0 0    5 1 0    - - -    16 2 0    1 0 0    37 3 0
July 30   3 1 0    - - -    - - -    14 2 0    3 0 0    79 7 0
Aug. 1    3 0 0    4 1 0    - - -    12 4 0    7 0 0    59 9 0
Aug. 3    5 0 0    13 3 0   - - -    18 9 0    5 0 0    119 7 0
Aug. 6    10 1 0   12 4 0   - - -    65 21 0   12 0 0   358 19 0
Aug. 8    12 7 0   24 8 2   - - -    115 32 0  19 0 0   331 38 0
Aug. 10   14 9 1   16 4 0   - - -    37 6 0    - - -    249 60 0
*****

```

CEW = corn earworms; GR = green stink bugs; BR = brown stink bugs
Locations: Woodland, Conway, 'Neck, Seaboard, Gaston and Jackson
Monitored by: L. Culpepper, K. Edwards, B. Johnson, T. Flythe,
D. Grant and B. Bryant

From: Tray Bridgers, Agricultural Extension Agent, Onslow County

Light Trap Data from Onslow County

```
*****
                        Number of Adult Insects
                        *****
Date      Bollworms   GSB    BSB   Hornworms
*****
July 4      6         3     0     0
July 6     20         7     0     0
July 9     25         19    3     0
July 11    21         10    0     0
July 13    33         10    3     1
July 16    31         10    0     0
July 18    34         3     5     3
July 20    39         18    2     6
July 23    25         5     0     3
July 25    25         0     0     0
July 27    57         4     0     2
July 30   105         7     0     0
August 1   70         3     0     3
August 3  185         3     0     0
August 6  190         40    0     0
August 8  288         88    0     3
August 10 200        100   0     4
*****
```

GSB = green stinks bugs; BSB = brown stink bugs

Trap location: Richlands; Cooperator: Richland Farms
Insect counts are from a single black light trap
located approximately 1 mile east of Richlands.

From: Kent Wooten, Agricultural Extension Agent, Robeson County

Light Trap Data from Robeson County

```
*****
                        Number of Adult Insects
                        *****
Date      BW     GSB    BSB    FAW
*****
July 6      12     -     -     -
July 7-8    23     -     -     -
July 9      18     -     -     -
July 10     15     -     -     -
July 11     11     -     -     -
July 12     14     -     -     -
July 13-15  47     18    3     -
July 16     18     7     1     2
July 17-18 132     17    4     -
July 19     98     11    1     11
July 20    105     7     1     9
July 21-22 172     5     0     13
July 23    105     2     0     2
July 24    102     3     0     0
```

July 25	97	5	1	3
July 26	93	4	0	4
July 27-29	165	6	0	3
July 30	58	3	0	4
July 31-1	191	35	1	4
August 2	69	2	1	1
August 3-5	168	18	1	3
August 6	63	7	0	0

BW = bollworms; GSB = green stick bugs;
 BSB = brown stink bugs; FAW = fall armyworms

Location is Rowland; monitored by Kay McGirt

From: Josh Gaddy, Agricultural Extension Agent, Sampson County

Light Trap Data from Sampson County

Number of Adult Insects

Date	BW	GSB	BSB	THW

July 2	----- trap set up -----			
July 5	3	0	1	1
July 6	3	0	0	0
July 9	3	7	0	4
July 11	3	1	1	2
July 13	4	4	0	8
July 16	----- power failure -----			
July 18	12	0	0	12
July 20	57	5	0	8
July 23	132	2	0	17
July 25	50	0	0	4
July 27	93	1	0	3
July 30	118	5	0	3
August 1	124	1	1	2
August 3	130	5	0	1
August 7	178	4	0	9
August 10	215	5	0	20

BW = cotton bollworms; GSB = green stink bugs;
 BSB = brown stink bugs; THW = tobacco hornworms

Black trap located 6 miles south of Clinton on
 US-701S on the farm of Mike and James Hope.

From: David E. Morrison, Agricultural Extension Agent, Scotland County

Light Trap Data from Scotland County

```

*****
                        Number of Adult Insects
*****
                Gibson                John's                Laurinburg
                *****                *****                *****
Date           BW  GSB  BSB  FAW           BW  GSB  BSB  FAW           BW  GSB  BSB  FAW
*****
July 11        13  14   0   0           22  33   1   0           12  10   1   0
July 13         8  10   0   0           17  25   6   0            3   7   0   0
July 16        16  14   0   0           61  14   0   0           26   5   0   0
July 18        16   5   0   0           74  24   2   0           57   6   0   0
July 20        41   7   0   0          223  41   0   0          156  11   0   0
July 23        26   1   0   0          268   3   0   0           81   1   0   0
July 25        62   3   0   0          138   1   0   0          146   6   0   1
July 27        53   4   0   0          164   4   0   0          110   5   0   0
July 30       133   9   0   0          377   5   0   0          175   5   0   1
Aug.  1        27   2   0   0          274   0   0   0           96   3   0   0
Aug.  3       142  23   0   0          308   1   0   0          323   9   0   0
Aug.  6       195  25   0   0          240  13   0   0          266  44   0   0
Aug.  8       123  19   0   0          132  17   1   0           44   9   1   2
Aug. 10        80  14   0   0           94  27   1   0           40   6   0   2
*****

```

BW = bollworm moth; GSB = green stink bugs;
 BSB = brown stink bugs; FAW = fall armyworms

From: Kevin Johnson, Agricultural Extension Agent, Wayne County

Light Trap Data from Wayne County

```

*****
                        Number of Adult Insects
*****
                Seven Springs                Goldsboro
                *****                *****
Date           GSB  BSB  CEW  HW           GSB  BSB  CEW  HW
*****
July 6          -   -   -   -            2   0   1   0
July 9          -   -   -   -           23   6   1   0
July 11         -   -   -   -            1   0   1   0
July 13         1   0   1   2            5   0   3   1
July 16         2   0   6   4             -   -   -   -
July 18         0   0   5   0           10   -  11   2
July 20         4   0   4   3             -   -   -   -
July 23         1   0   8   5            2   0  61   2
July 25         -   -   -   -            1   1  50   3
July 27         2   0   4   3            3   0 120   0
July 30         2   1   6   2            7   5  75   0
August 1        5   0  12   2            5   1  51   0
August 3        -   -   -   -            0   2  25   1
August 6        2   2  10  20            1   0 111   5
August 8        4   0  26   2            7   1 101   3
*****

```

GSB = green stink bugs; BSB = brown stink bugs;
 CEW = corn earworms; HW = hornworms

Cooperators: D. M. Price (Seven Springs); Willie Howell (Goldsboro)

From: Norman E. Harrell, Agricultural Extension Agent, Wilson County

Light Trap Data from Wilson County

```

*****
                        Number of Adult Insects
*****
                Lucama      Pender's Xrds      Sims      Fountain
*****
Date           CEW  BS  GS    CEW  BS  GS    CEW  BS  GS    CEW  BS  GS
*****
July 16        -   -   -      -   -   -      -   -   -      4   0   9
July 18        -   -   -     14   0   1      0   0   2      4   0  25
July 20        -   -   -     10   0   0      3   0   0     18   0  24
July 23       12   0   0     17   0   1      0   0   0     37   0   3
July 25        2   0   1     25   0   0      1   0   0     13   0   3
July 27        4   0   2     15   0   1      4   0   0     20   0  14
July 30        7   0   2     12   0   1      9   0   0     36   0  26
August 1       4   0   0     12   0   0      0   0   0     26   0   0
August 3       6   0   1     31   0   0      0   0   1     58   0  10
August 6      25   0   6     46   0   2     22   0   3    121   0  60
August 8      25   3   2     28   0   1     11   0   3     94   0  78
August 10     3   1   2     17   0   1      4   0   2     27   0  38
*****
  
```

Locations: Lucama, Pender's Crossroads, Sims and Fountain
 Monitored by: Chris Bass, Adam Gardner, Thad Sharpe and Barbara Smith

Recommendations for the use of chemicals are included in this publication as a convenience to the reader. The use of brand names and any mention or listing of commercial products or services in this publication does not imply endorsement by North Carolina State University, North Carolina A&T State University or North Carolina Cooperative Extension nor discrimination against similar products or services not mentioned. Individuals who use chemicals are responsible for ensuring that the intended use complies with current regulations and conforms to the product label. Be sure to obtain current information about usage regulations and examine a current product label before applying any chemical. For assistance, contact an agent of North Carolina Cooperative Extension.

Employment and program opportunities are offered to all people regardless of race, color, national origin, sex, age or disability. North Carolina State University, North Carolina A&T State University, U.S. Department of Agriculture, and local governments cooperating.

